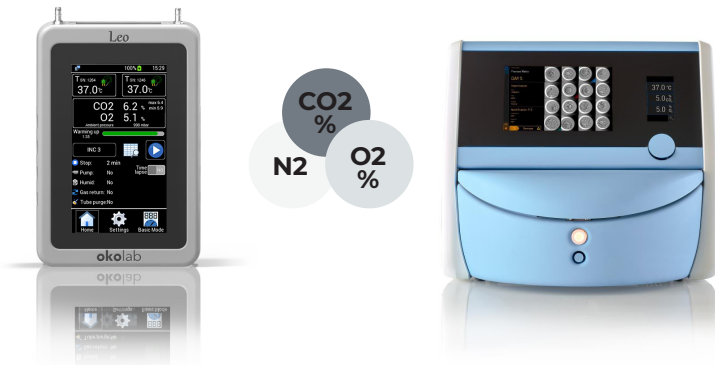
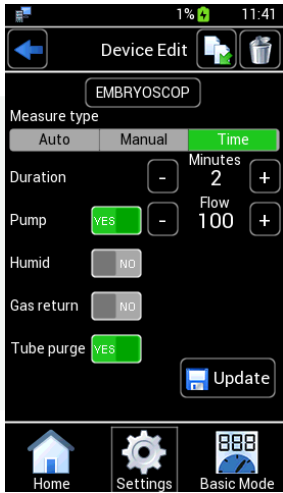


**RECOMMENDED  
DEVICE SETUP  
IN LEO 2.0  
FOR GAS  
MEASUREMENT**



**PRECAUTIONS:**

- Please be cautious with your cultured embryos, considering that during the measurement procedure the composition of the gas in the chamber may be affected.
- Read the manuals for the incubator and LEO 2.0 for usage and safety details.



Evaluate the need for chamber cleaning and disinfection after working on the incubator.



As good practice, it is recommended to have LEO 2.0 charged before use, and not to charge it during use.



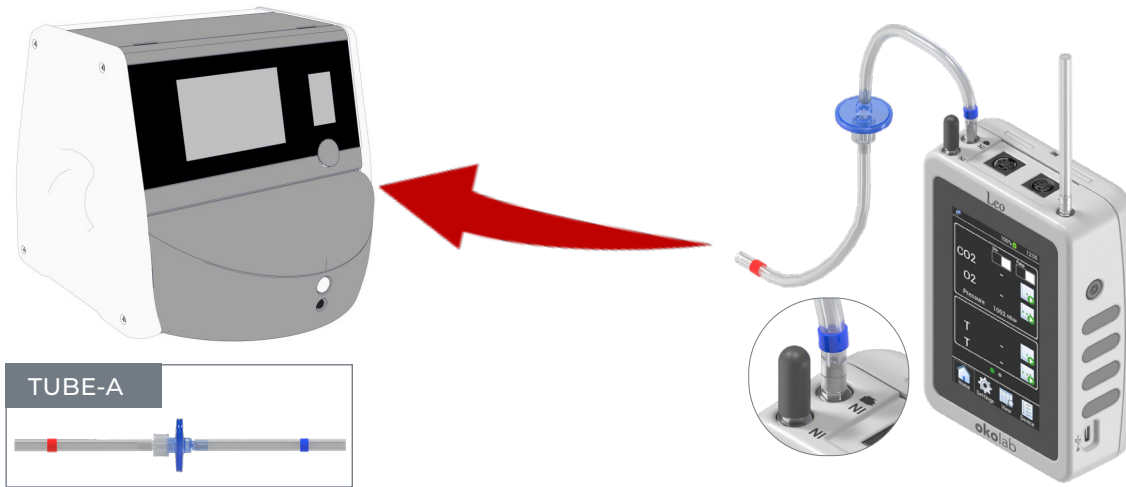
Always read the manual of the devices.



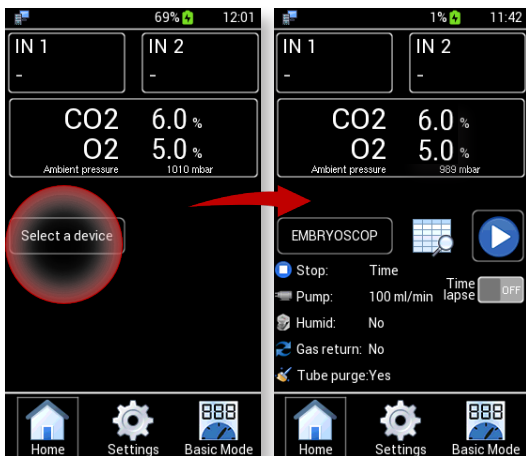
If LEO 2.0 shows a message that it's warming up, it is advised to complete the warm up period before using.

**STEP 1**

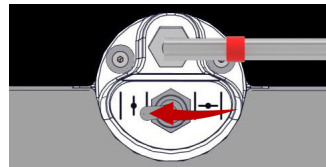
Connect TUBE-A to **LEO 2.0's** **IN** port and to **EMBRYOSCOPE's** gas sample port.



**STEP 2** Select Device.



**STEP 3** Open **EMBRYOSCOPE's** gas sampling port outlet valve.



**STEP 4** Start a **LEO 2.0** gas measurement.

